



Newsletter—2007

Page 1: Zero Carbon
Page 2: Zero Carbon Projects
Page 3: Shrove Tuesday
Page 4: Contacts page

The new year 2007 brings with it new challenges. Global Warming is upon us, and the government is rising to the threat and to the undertaking of the Kyoto Protocol.



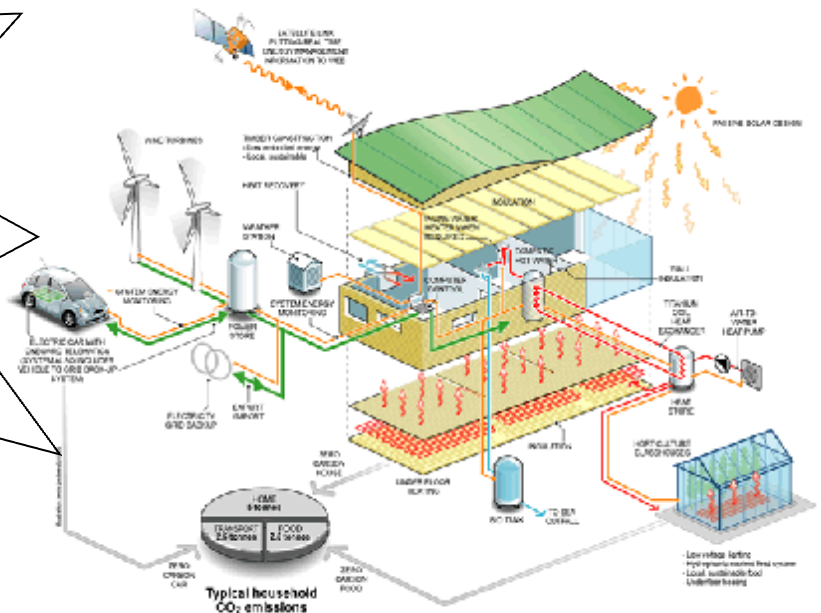
Reducing carbon emission to the extent that we can realise the ambitious targets set down, is a huge challenge, that we can all aspire to contribute to.

Is Zero Carbon Design the key? Is Zero Carbon Design the key?

STOP PRESS

Earthquake 28.04.07

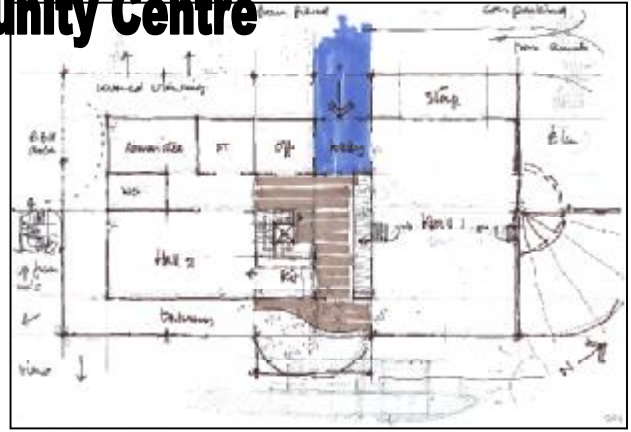
All members of the Practice survived the Earthquake last weekend. The Practice was inundated with calls Monday 30th, and 2 churches were inspected by 11.00am. If you have any concerns following this event please contact us.



The Practice is committed to producing low-energy design at every opportunity. Many projects undertaken during the 30 years of Practice have incorporated energy saving measures, from simple passive solar orientation, to super insulated elements, whole house ventilation with heat recovery and latterly solar heating and rain water harvesting systems.

Zero Carbon Projects:-

St Martin's Community Centre



The PCC of St Martins Church, Cheriton plan to replace their aging temporary Community Centre with a purpose built low energy building incorporating 2 halls, crèche, offices and a changing room . The brief demands low-energy design. We are working with Eco-Librium, John Love Associates and Tony Gee & Partners with the Cyril Orchard Group project managing and providing cost control. We plan to provide ground cool water harvesting, solar heating (passive and collectors) wind turbines, vent heat recovery and green roofs.



Domestic Projects include:

- Rebuild of garage and pool extension at Bonnington. Solar Heating, ground solar heat pump, ventilation with Heat Recovery.

Latest News

Folkestone Youth Project— Planning Consent has been granted to turn a former shipping office and lorry parking the harbour, into a Youth Project with a skate board park.

St Bartholomew's Church Extension is roofed in!



- Extension to an ex council house in Dover Road, Folkestone, (passive solar, Solar Heating, whole house ventilation with heat recovery and rainwater harvesting).

New Instructions: -

- New low-energy house in Hythe, with passive solar, integral solar collector, solar heating, rain-water harvesting.

Zero Carbon Homes

"The long term effects of climate change finally reached the building industry in December when Ruth Kelly Secretary of State for Communities and Local Government announced the publication of a consultation on progressive changes to building regulations to achieve zero-carbon new homes."

The government hopes these measures will help meet its target of cutting CO2 emissions to 60% of 1990 levels by 2050. These proposals followed Gordon Brown's pre-budget statement when he revealed plans to exempt newly built zero-carbon homes from stamp duty, the response has been mixed.

The treasury defines a zero-carbon home as one that over the course of a year will generate enough power from the renewable sources so that it does not contribute to climate change.

Other News



Well Done Hannah & Andy !

Two members of the Practice joined Kent Planning in the first Pancake Race in the precinct on Shrove Tuesday . Despite inclement weather, over £700 was raised by this event, jointly organised by Folkestone Town Centre Management and Folkestone Rotary Club. Roger Joyce provided the commentary for the afternoon.



Tina has gone to old pastures new, working for Halksworth Wheeler in town—if you want your B&O, contact Tina. She is replaced by Roger's youngest daughter Hannah. She may have been a familiar face at the Hythe Bay Seafood Restaurant that she managed for 2 years. Currently studying for Pitman Diploma in Business Management and PA Studies.

Channel Chamber Business Awards 2007

In this year's Small Business Awards the Practice has been presented with A "Highly recommended Certificate in recognition of your company's achievements"



Roger Joyce Associates CHARTERED ARCHITECTS

39 Bouverie Square, Folkestone, Kent CT20 1BA
Telephone: 01303 246400 Facsimile: 01303 246455
email: info@rogerjoyceassociates.co.uk
www.rogerjoyceassociates.co.uk



Kam Garden Bouverie Road West—20/04/07

Office to rent:

We have a 3rd floor penthouse office available at 39 Bouverie Square. For more information please call the Office on 01303 246400.

Mission Statement

"Our aim is to guide clients through the architectural process by providing a friendly, informed, professional and efficient service and to create best practice architecture that benefits the client and community."

Roger Joyce Associates is now in its 30th year. The Principal obtained a Post Graduate Diploma in Building Conservation in 1990 and has worked on scheduled monuments (SM) and Grade I and Grade II Listed buildings.

The Practice assesses many churches under the Inspection of Churches Measure and prepares the relevant Quinquennial Inspection Reports.

Our portfolio includes many barn conversions, each of which required an historic farmstead study to be completed. As well as new build and contemporary design work.

The Practice design work has been recognised by several awards bodies over the years, including The National Self-Build Award, The RIBA Downland Prize for Architects and other local awards such as the Maidstone Design Award, Shepway Building Design Award and Folkestone's Civic Pride Award for Restoration of a building and in Dover, the Downland Prize for use of Brick for The Grand Shaft.

The Practice has a strong commitment to sustainable energy saving design, and we aim to incorporate passive and active solar heating, rainwater harvesting, heat recovery and other energy-saving measures in all projects, however modest.

Farewell to Rob & Dan—our two youngest staff members are on the move: Rob Lyons joined us nearly a year ago, having completed an Electrical Engineering Level 3 NVQ at South Kent College. He is looking to join another Practice to extend his experience. Daniel Corner is off to University to begin the long haul of Architectural Studies, and will seek to gain practical experience between now and the beginning of September. Good luck to them both!

Useful Links

www.shepwayonline.co.uk

www.folkestonerotary.org

www.carbontrust.co.uk

www.est.org.uk

www.builderandengineer.co.uk

www.channelchamber.co.uk

www.halksworthwheeler.co.uk